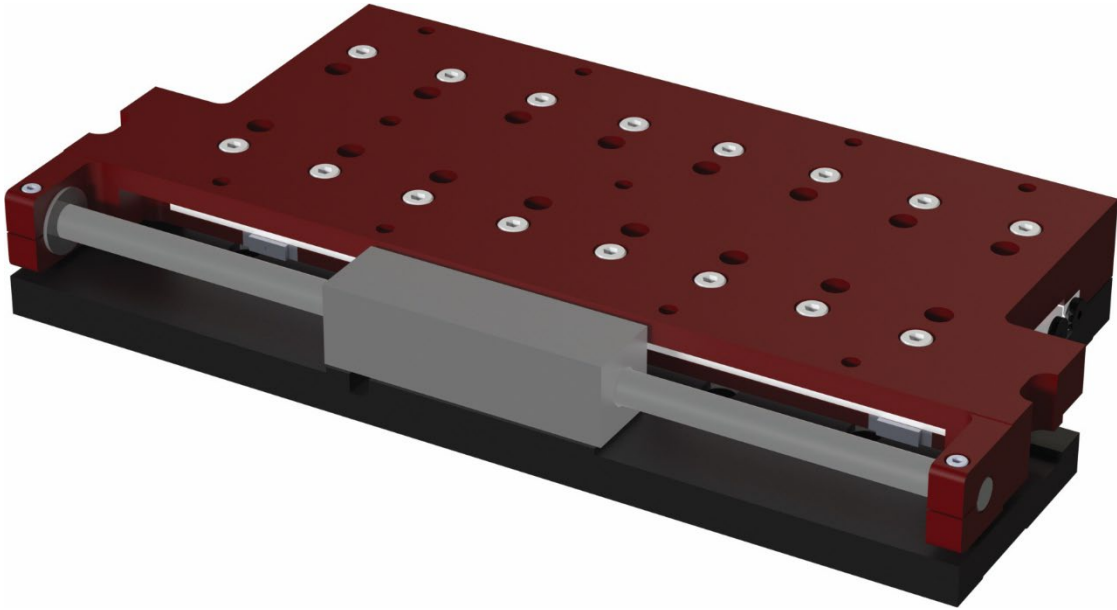


NCR Series Stages



The NCR series stages are compact, low-profile stages providing high positional accuracy. Ironless servo motors provide high acceleration, making this an extremely responsive system with high position stability. Available in a variety of lengths with several force and feedback options.

NCR Series Stage Widths Available: 50mm | 75mm | 100mm | 150mm

Specifications (for 100mm width)

	NCR100-050	NCR100-100	NCR100-150	NCR100-200	NCR100-250	NCR100-300
Width	100mm					
Travel Length	50mm	100mm	150mm	200mm	250mm	300mm
Load Capacity	45.5 kg					
Straightness of Travel	4.0 μ m	8.0 μ m	12.0 μ m	16.0 μ m	20.0 μ m	24.0 μ m
Flatness of Travel	4.0 μ m	8.0 μ m	12.0 μ m	16.0 μ m	20.0 μ m	24.0 μ m
Bi-Directional Repeatability	\pm 1.0 μ m					
Linear Accuracy	3.0 μ m	5.0 μ m	7.0 μ m	9.0 μ m	11.0 μ m	12.0 μ m
Peak Force	7.2N					
Continuous Force	1.8N					
Max Velocity	0.9m/s	1.0m/s	1.2m/s	1.2m/s	1.3m/s	1.3m/s
Max Acceleration	17m/s ²	12m/s ²	10m/s ²	8m/s ²	7m/s ²	6m/s ²

26771 5th Street W, Zimmerman, MN 55398

Phone: (763) 856-8300 / Fax: (763) 856-8301 / E-mail: sales@reliantsystemsinc.com

www.reliantsystemsinc.com

Reliant Systems, Inc. Confidential & Proprietary Information