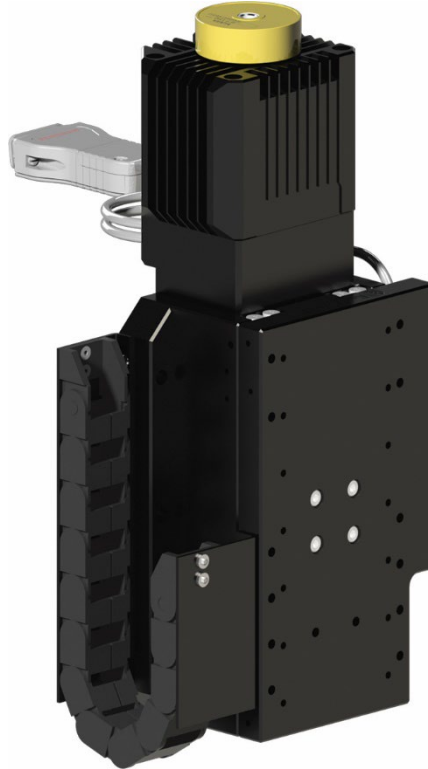


HZ85 Stage



The HZ85 is a compact Z stage designed for applications that demand positional stability with a high workload. The high-resolution stepper motor and high preload drive offer incredibly fine incremental motion, while key design features provide thermal stability and limit thermal drift at position.

Specifications	
Travel	85mm
Yaw	± 3.1 arcsec
Pitch	± 5.1 arcsec
Straightness	$\pm 0.75\mu\text{m}$
Flatness	$\pm 0.75\mu\text{m}$
Bi-Directional Repeatability	$\pm 1.0\mu\text{m}$
Accuracy	$\pm 5.0\mu\text{m}$