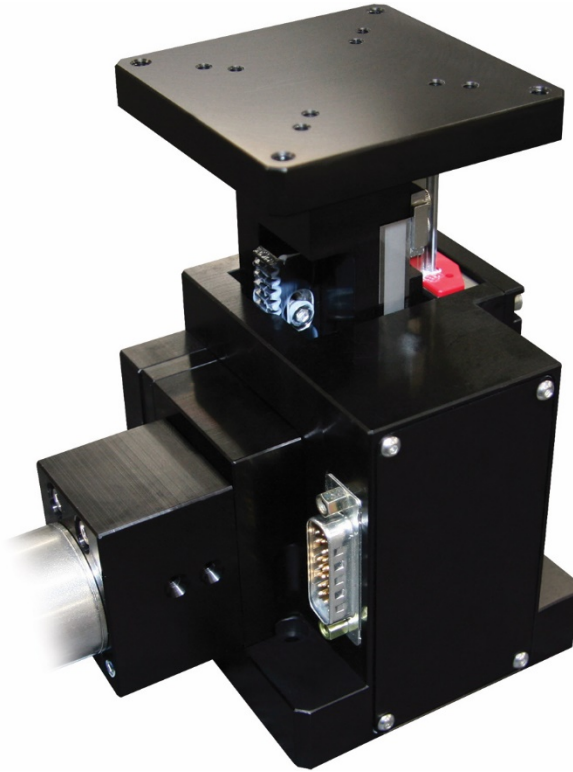


ESW30 Z Stage



The ESW30 is an elevator stage offering 30mm of travel. This stage is worm gear, rack and pinion driven allowing for a very compact footprint without sacrificing precision, repeatability, or accuracy. The usage of a standard NEMA 23 motor mount ensures a wide range of stepper motor options. The ESW30 is a very high-quality stage suited for the growing demand of Z-stages within the automation industry. This is a perfect fit for applications involving intelligent and safe material handling in pick and place settings throughout the medical and semiconductor sectors.

Specifications	
Travel	30mm
Drive Type	Worm Gear
Accuracy	$\pm 5.0\mu\text{m}$
Bi-Directional Repeatability	$\pm 3.0\mu\text{m}$
Pitch, Roll, Yaw	± 25 arcsec
Straightness	$\pm 10.0\mu\text{m}$
Flatness	$\pm 10.0\mu\text{m}$