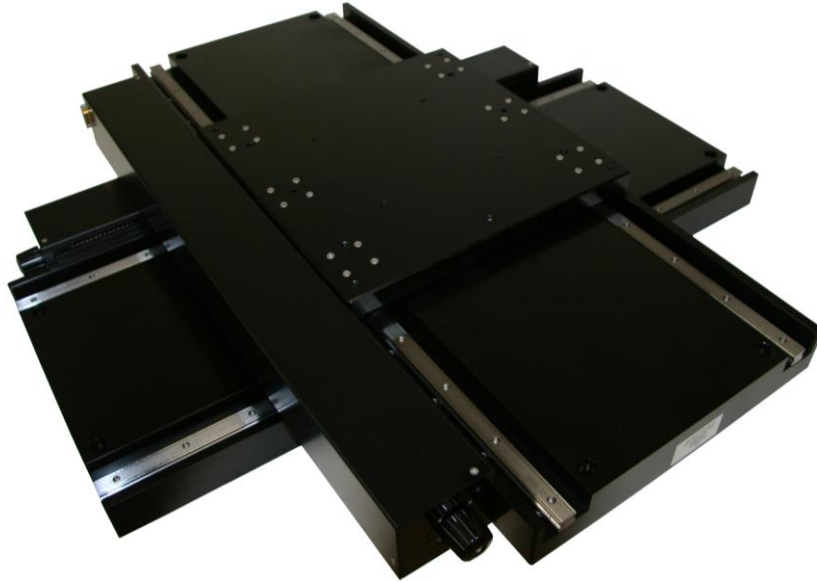


TR450 Stage



TR450, XY Stack

The TR450 body is wider than most stages in this travel length in order to minimize the cantilever and its affects when configured as an XY stage. It also provides a larger, more stable platform for sample fixturing. Vertical and horizontal straightness errors are less than $\pm 5.0\mu\text{m}$ over the full 450mm travel, even when measured as an XY stack. Applications include small flat panel inspection and circuit board processing.

Specifications	
Travel	450mm
Linear Guides	15mm Recirculating Ball Bearing
Drive Type	5mm Ball Screw
Motor Mount	NEMA23
Linear Accuracy	$\pm 15\mu\text{m}$ w/ linear compensation
Bidirectional Repeatability	$\pm 2.0\mu\text{m}$
Pitch	± 12 arc-sec
Yaw	± 6 arc-sec
Straightness of Travel	$\pm 5.0\mu\text{m}$ / Travel
Flatness of Travel	$\pm 5.0\mu\text{m}$ / Travel
Travel Limits	Optical, 5-24VDC



TR450

