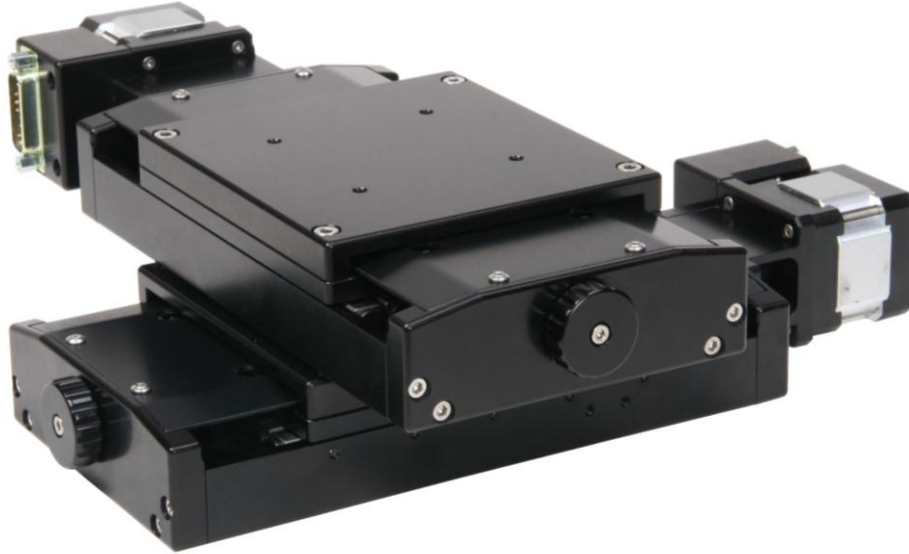


## API50 Crossed Roller Bearing Stage



The API50 is a mid-range precision, low profile, 3mm crossed roller bearing stage with excellent stiffness and durability. The high efficiency ball screw drive uses a preloaded nut for good bi-directional repeatability without the use of a linear encoder. A NEMA17 motor mount accepts stepper, DC servo, or brushless servo motors. Optical limit and home switches provide protection with long-term reliability.

<b>Specifications</b>	
Travel	50mm
Linear Bearing	3mm Crossed Roller
Stage Weight	2Kg
Maximum Load	20Kg
Ball Screw Lead	1.0mm
Motor Mount	NEMA17
Limit & Home Switches	Optical, 5VDC, Active High (Open Collector)
Maximum Pitch	$\pm 25\mu\text{rad}$ ( $\pm 5$ arc-sec)
Maximum Yaw	$\pm 20\mu\text{rad}$ ( $\pm 4$ arc-sec)
Bidirectional Repeatability	$\pm 1.0\mu\text{m}$
Linear Accuracy*	$\pm 3.0\mu\text{m}$

\*With linear error compensation.

## API50

